



SOLITRONICS ENGINEERING LTD.

2202, Perfect Ind. Bldg., 31 Tai Yau St., San Po Kong, Kowloon, Hong Kong S.A.R., China

TEL : (852) 2730-8145

FAX : (852) 2730-3245

E-mail : info@solitronics.com

Ø22mm Key-Lock Selector Switch (Non-Lighted Key-lock Selector Switch with Metal Mounting Base)

Date:
4th November 2009

Group:

SE-22D-KS

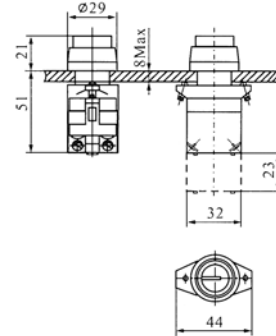
Part Number:

SE-22D-KS - - F1 - M -

Data Sheet:




SE-22D-KS

IEC-60947 GB-14048.5 IP40



Key-Lock
Selector Switch
Form-1

Outline Dimensions

Product	Actuator Style	Switching Action	Selector Position	Contact Block	Ordering Code	Color	Key Removable Position
22mmØ Key-Lock Selector	 Form-1 (Key-Lock)	L R 	2-Positons	1NO+1NC	SE-22D-KS11-2-F1	M = Metallic colour	L=Left C=Center R=Right A=All (Each switch supplied with two keys)
			2-Positons	2NO	SE-22D-KS20-2-F1		
		L C R 	2-Positons	2NC	SE-22D-KS02-2-F1		
			3-Positons	1NO+1NC	SE-22D-KS11-3-F1		
			3-Positons	2NO	SE-22D-KS20-3-F1		
		3-Positons	2NC	SE-22D-KS02-3-F1			

Ordering Code (20 Digits): SE-22D-KS - - F1 - M -

SE-22D-KS	<input type="checkbox"/> <input type="checkbox"/>	-	<input type="checkbox"/>	-	F1	-	M	-	<input type="checkbox"/>	
SE-22D Key-Switch	Contact -Block Type		No. of Selector Positions & Switch Action		Actuator Form		Actuator Colour		Key-Removal Position	No. of Keys
	11=1NO+1NC 20=2NO 02=2NC		2=2-Position Maintained 3=3-Position Maintained		F1		M=Metallic-color		L=Left C=Center R=Right A=All	Each switch supplied with two keys

Technical Parameters

Environmental Temperature	-25°C ~ +55°C	Protection Level	IP65	Voltage	AC-15	DC-13
Contact Resistance	≤ 50mΩ	Mechanical Life	50x10 ³ Times	24V		6A
Withstand Voltage	2500VAC 50Hz 1min			48V		3A
Insulation Voltage Rating U _i	660VAC			110V		1A
				220V	6A	0.5A
				380V	4A	
				660V	2A	

Remarks: Due to continuous development, all specifications are subject to change without prior notice. Please confirm all details at time of ordering. 4-11-2009