



SOLITRONICS ENGINEERING LTD.

2202, Perfect Ind. Bldg., 31 Tai Yau St., San Po Kong, Kowloon, Hong Kong S.A.R., China

TEL : (852) 2730-8145

FAX : (852) 2730-3245

E-mail : info@solitronics.com

Ø22mm Selector Switch

(LED-Lighted or Non-Lighted Selector Switches with Metal Mounting Base)

Date:

4th November 2009

Group:

SE-22D-SS

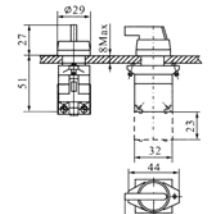
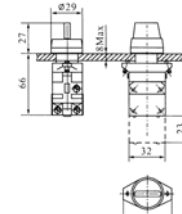
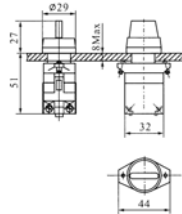
Part Number:

SE-22D-SS[X][X]-[X][X][X]-F[X][X]-[X]-[X][X]

Data Sheet:

SE-22D-SS

IEC-60947 GB-14048.5 IP40



Form-F11 & F21 Non-Lighted Selector with Short-Lever

Form-F11 & F21 LED-Lighted Selector with Short-Lever

Form-F12 & F22 Non-Lighted Selector with Long-Lever

Outline Dimensions For Form-F11 & F21 Non-Lighted with Short-Lever

Outline Dimensions For Form-F11 & F21 LED-Lighted with Short-Lever

Outline Dimensions For Form-F12 & F22 Non-Lighted with Long-Lever

Product	Actuator Button Style	Switching Action	Contact Block	Ordering Code	Lever/Bezel Color	LED-Lighted Lamp Voltage																																				
Non-Lighted Short-Lever Selector <small>(Form-F21 with Matt Metallic-Bezel Not illustrated)</small>		<table border="0"> <tr><td>L</td><td>R</td></tr> <tr><td>↙</td><td>↘</td></tr> <tr><td>2T</td><td></td></tr> </table>	L	R	↙	↘	2T		<table border="0"> <tr><td>L</td><td>C</td></tr> <tr><td>↙</td><td>↘</td></tr> <tr><td>2L</td><td></td></tr> </table>	L	C	↙	↘	2L		<table border="0"> <tr><td>C</td><td>R</td></tr> <tr><td>↙</td><td>↘</td></tr> <tr><td>2R</td><td></td></tr> </table>	C	R	↙	↘	2R		1NO+1NC	SE-22D-SS11-N2[X]-F11/21	<u>Lever Colour</u> R=Red G=Green Y=Yellow K=Black <u>Actuator colour:</u> Form F11 & F12: Black without Metallic Bezel Form F21 & F22: Black with Matt Metallic-Bezel	00=No Lamp																
			L	R																																						
			↙	↘																																						
		2T																																								
		L	C																																							
		↙	↘																																							
2L																																										
C	R																																									
↙	↘																																									
2R																																										
2NO	SE-22D-SS20-N2[X]-F11/21																																									
2NC	SE-22D-SS02-N2[X]-F11/21																																									
1NO+1NC	<table border="0"> <tr><td>L</td><td>C</td><td>R</td></tr> <tr><td>↙</td><td>↘</td><td></td></tr> <tr><td>3T</td><td></td><td></td></tr> </table>	L	C	R	↙	↘		3T			<table border="0"> <tr><td>L</td><td>C</td><td>R</td></tr> <tr><td>↙</td><td>↘</td><td></td></tr> <tr><td>3L</td><td></td><td></td></tr> </table>	L	C	R	↙	↘		3L			<table border="0"> <tr><td>L</td><td>C</td><td>R</td></tr> <tr><td>↙</td><td>↘</td><td></td></tr> <tr><td>3R</td><td></td><td></td></tr> </table>	L	C	R	↙	↘		3R			<table border="0"> <tr><td>L</td><td>C</td><td>R</td></tr> <tr><td>↙</td><td>↘</td><td></td></tr> <tr><td>3B</td><td></td><td></td></tr> </table>	L	C	R	↙	↘		3B			1NO+1NC	SE-22D-SS11-N3[X]-F11/21
		L	C	R																																						
		↙	↘																																							
3T																																										
L	C	R																																								
↙	↘																																									
3L																																										
L	C	R																																								
↙	↘																																									
3R																																										
L	C	R																																								
↙	↘																																									
3B																																										
2NO	SE-22D-SS20-N3[X]-F11/21																																									
2NC	SE-22D-SS02-N3[X]-F11/21																																									
Non-Lighted Long-Lever Selector <small>(Form-F22 with Matt Metallic-Bezel Not illustrated)</small>		<table border="0"> <tr><td>L</td><td>R</td></tr> <tr><td>↙</td><td>↘</td></tr> <tr><td>2T</td><td></td></tr> </table>	L	R	↙	↘	2T		<table border="0"> <tr><td>L</td><td>C</td></tr> <tr><td>↙</td><td>↘</td></tr> <tr><td>2L</td><td></td></tr> </table>	L	C	↙	↘	2L		<table border="0"> <tr><td>C</td><td>R</td></tr> <tr><td>↙</td><td>↘</td></tr> <tr><td>2R</td><td></td></tr> </table>	C	R	↙	↘	2R		1NO+1NC	SE-22D-SS11-N2[X]-F12/22	<u>Button Colour</u> R=Red G=Green Y=Yellow B=Blue W=White <u>Actuator Colour</u> Black only	21=6V AC/DC 22=12V AC/DC 23=24V AC/DC 24=36V AC/DC 25=48V AC/DC 26=110V AC/DC 27=127V AC/DC 28=220V DC 31=220V AC only 32=380V AC only																
			L	R																																						
			↙	↘																																						
		2T																																								
		L	C																																							
		↙	↘																																							
2L																																										
C	R																																									
↙	↘																																									
2R																																										
2NO	SE-22D-SS20-N2[X]-F12/22																																									
2NC	SE-22D-SS02-N2[X]-F12/22																																									
1NO+1NC	<table border="0"> <tr><td>L</td><td>C</td><td>R</td></tr> <tr><td>↙</td><td>↘</td><td></td></tr> <tr><td>3T</td><td></td><td></td></tr> </table>	L	C	R	↙	↘		3T			<table border="0"> <tr><td>L</td><td>C</td><td>R</td></tr> <tr><td>↙</td><td>↘</td><td></td></tr> <tr><td>3L</td><td></td><td></td></tr> </table>	L	C	R	↙	↘		3L			<table border="0"> <tr><td>L</td><td>C</td><td>R</td></tr> <tr><td>↙</td><td>↘</td><td></td></tr> <tr><td>3R</td><td></td><td></td></tr> </table>	L	C	R	↙	↘		3R			<table border="0"> <tr><td>L</td><td>C</td><td>R</td></tr> <tr><td>↙</td><td>↘</td><td></td></tr> <tr><td>3B</td><td></td><td></td></tr> </table>	L	C	R	↙	↘		3B			1NO+1NC	SE-22D-SS11-N3[X]-F12/22
		L	C	R																																						
		↙	↘																																							
3T																																										
L	C	R																																								
↙	↘																																									
3L																																										
L	C	R																																								
↙	↘																																									
3R																																										
L	C	R																																								
↙	↘																																									
3B																																										
2NO	SE-22D-SS20-N3[X]-F12/22																																									
2NC	SE-22D-SS02-N3[X]-F12/22																																									
LED-Lighted Short-Lever Selector <small>(Form-F21 with Matt Metallic-Bezel Not illustrated)</small>		<table border="0"> <tr><td>L</td><td>R</td></tr> <tr><td>↙</td><td>↘</td></tr> <tr><td>2T</td><td></td></tr> </table>	L	R	↙	↘	2T				1NO+1NC	SE-22D-SS11-D2T-F11/21	<u>Actuator Colour</u> Black only																													
			L	R																																						
			↙	↘																																						
		2T																																								
		2NO	SE-22D-SS20-D2T-F11/21																																							
		2NC	SE-22D-SS02-D2T-F11/21																																							
1NO+1NC	<table border="0"> <tr><td>L</td><td>C</td><td>R</td></tr> <tr><td>↙</td><td>↘</td><td></td></tr> <tr><td>3T</td><td></td><td></td></tr> </table>	L	C	R	↙	↘		3T							1NO+1NC	SE-22D-SS11-D3T-F11/21																										
		L	C	R																																						
		↙	↘																																							
3T																																										
2NO	SE-22D-SS20-D3T-F11/21																																									
2NC	SE-22D-SS02-D3T-F11/21																																									

[X] For 2-Pos. Switch: Insert T for Maintained; L for L- to-C Mom. R for R- to-C Mom. [X] For 3-Pos. Switch: Insert T for Maintained; L for L-to-C Mom.; R for R-to-C Mom.; B for L & R Mom.

Ordering Code (24 Digits): SE-22D-SS[X][X]-[X][X][X]-F[X][X]-[X]-[X][X]

SE-22D-SS	[X][X]	-	[X]	[X][X]	-	F[X][X]	-	[X]	-	[X][X]
22D Selector Switch	Contact-Block Type		Non-Lighted or Lighted	No. of Positions & Switch Action		Lever Form		Lever Colour Actuator Colour		Lamp voltage rating
For Short-Lever and actuator without Matt Metallic-bezel specify Form:- F11 or F12	11=1NO+1NC 20=2NO 02=2NC		N=Non-Lighted D=LED-Lighted	2T=2-Position Maintained 2L=2-Position L-to-C Momentary 2R=2-Position R-to-C Momentary 3T=3-Position L, R & C Maintained 3L=3-Position L-to-C Mom.; R & C Maintained 3R=3-Position R-to-C Mom.; L & C Maintained 3B=3-Position L-to-C & R to C Momentary		F11 (Short-Lever) F12 (Long-Lever) F21 (Short-Lever with Matt Metallic-Bezel) F22 (Long-Lever with Matt Metallic-Bezel)		<u>Lever-colour</u> R=Red G=Green Y=Yellow B=Blue W=White K=Black <u>Actuator-Colour</u> F11 & F12 Black without Metallic Bezel F21 & F22 Black with Matt Metallic-Bezel		00=No Lamp 21=6V AC/DC 22=12V AC/DC 23=24V AC/DC 24=36V AC/DC 25=48V AC/DC 26=110V AC/DC 27=127V AC/DC 28=220V DC 31=220V AC 32=380V AC
For Long-Lever and actuator with Matt Metallic-bezel specify Form:- F21 or F22			Remarks: LED-Lighted type supplied with high-tech LED Light Source Block							

Technical Parameters

Environmental Temperature	-25°C ~ +55°C	Protection Level	IP65	Voltage	AC-15	DC-13
Contact Resistance	≤ 50mΩ	Mechanical Life	300x10 ³ Times	24V		6A
Withstand Voltage	2500VAC 50Hz 1min			48V		3A
Insulation Voltage Rating U _i	660VAC			110V		1A
				220V	6A	0.5A
				380V	4A	
				660V	2A	

Remarks: Due to continuous development, all specifications are subject to change without prior notice. Please confirm all details at time of ordering. 10-12-2008