



SOLITRONICS ENGINEERING LTD.

2202, Perfect Industrial Building, 31 Tai Yau Street, San Po Kong, Kowloon, Hong Kong

TEL : (852) 2730-8145
 FAX : (852) 2730-3245
 E-mail : info@solitronics.com

30mmØ Push-button Switches (LED-Lighted and Non-Lighted) with Brush Metal Bezel and Metal Mounting Base

Date:
24th Mar 2007

Group:
 SE-30D

Part Number:
SE-30D-PBXX-XX-FX-X-XX

Data Sheet:
SE-30D-PB-F1+2

IEC-60947 IP65



Form-1



Form-2

Outline Dimension
 for Lighted

Outline Dimension
 for Non-Lighted

Drilling Plan



Product	Style	Working Manner	Contact	Type	Color	Lamp Voltage
Flush Round Push-Button with Brushed Metal Bezel		Momentary	11	SE-30D-PB11-XM-F1	Non-Lighted R=Red G=Green Y=Yellow B=Blue W=White K=Black	00=No Lamp 21=6V AC/DC 22=12V AC/DC 23=24V AC/DC 24=36V AC/DC 25=48V AC/DC 26=110V AC/DC 27=127V AC/DC 28=220V DC only 31=220V AC only 32=380V AC only
			20	SE-30D-PB20-XM-F1		
			02	SE-30D-PB02-XM-F1		
		Maintained	11	SE-30D-PB11-XT-F1		
			20	SE-30D-PB20-XT-F1		
			02	SE-30D-PB02-XT-F1		
Extended Round Push-button with Brushed Metal Bezel		Momentary	11	SE-30D-PB11-XM-F2	Lighted R=Red G=Green Y=Yellow B=Blue W=White	
			20	SE-30D-PB20-XM-F2		
			02	SE-30D-PB02-XM-F2		
		Maintained	11	SE-30D-PB11-XT-F2		
			20	SE-30D-PB20-XT-F2		
			02	SE-30D-PB02-XT-F2		

Ordering Code: SE-30D-PBXX-XX-XX-X-XX

SE-30D-PB	Contact XX	-	Configuration XX	-	Button Form XX	-	Color X	-	Lamp Voltage XX
	11=1NO+1NC 20=2NO 02=2NC		NM=Non-Lighted Momentary NT= Non-Lighted Maintained DM=LED Lighted Momentary DT= LED Lighted Maintained		F1= Flush Button F2= Extended Button		R=Red G=Green Y=Yellow B=Blue W=White K=Black		00=No Lamp 26=110V AC/DC 21=6V AC/DC 27=127V AC/DC 22=12V AC/DC 28=220V DC only 23=24V AC/DC 31=220V AC only 24=36V AC/DC 32=380V AC only 25=48V AC/DC

Technical Parameters

Environmental Temperature	-25°C ~ +55°C	Voltage	AC-15	DC-13
Contact Resistance	≤ 50mΩ	24V		6A
Withstand Voltage	2500VAC 50Hz 1min	48V		3A
Insulation Voltage Rating U _i	660VAC	110V		1A
Protection Level	IP65	220V	6A	0.5A
Mechanical Life	3x10 ⁶ Times	380V	4A	
		660V	2A	



SOLITRONICS ENGINEERING LTD.

2202, Perfect Industrial Building, 31 Tai Yau Street, San Po Kong, Kowloon, Hong Kong

TEL : (852) 2730-8145

FAX : (852) 2730-3245

E-mail : info@solitronics.com

30mmØ LED Mushroom Push-button (LED-Lighted and Non-Lighted) with Brush Metal Bezel and Metal Mounting Base

Date:
24th Mar 2007

Group:
SE-30D

Part Number:
SE-30D-MRXX-XX-XX-X-XX-XX

Data Sheet:
SE-30D-MR

IEC-60947 GB-14048.5 IP40



**Emergency
Form-1**



**Mushroom
Form-2**


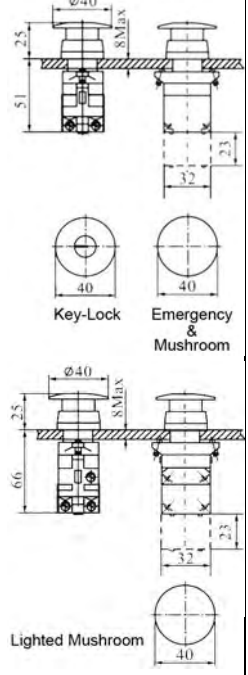





**Lighted Mushroom
Form-3**



**Key-Lock Mushroom
Form-4**



Product	Style	Working Manner	Contact	Type	Color	Lamp Voltage	Diameter	Outline Dimensions
Emergency Stop Push-button with Brushed Metal Bezel (Non-Lighted)		Push to maintain	11	SE-30D-MR11-NT-F1	R=Red G=Green	00=No Lamp	40Ø 60Ø	
			20	SE-30D-MR20-NT-F1				
		Twist to release	02	SE-30D-MR02-NT-F1				
Mushroom Push-button with Brushed Metal Bezel (Non-Lighted)		Momentary	11	SE-30D-MR11-NM-F2	R=Red G=Green Y=Yellow K=Black			
			20	SE-30D-MR20-NM-F2				
			02	SE-30D-MR02-NM-F2				
		Maintained	11	SE-30D-MR11-NT-F2				
			20	SE-30D-MR20-NT-F2				
02	SE-30D-MR02-NT-F2							
Lighted Mushroom Push-button with Brushed Metal Bezel		Momentary	11	SE-30D-MR11-DM-F3	R=Red G=Green Y=Yellow W=White	21=6V AC/DC 22=12V AC/DC 23=24V AC/DC 24=36V AC/DC 25=48V AC/DC 26=110V AC/DC 27=127V AC/DC 28=220V DC only 31=220V AC only 32=380V AC only		
			20	SE-30D-MR20-DM-F3				
			02	SE-30D-MR02-DM-F3				
		Maintained	11	SE-30D-MR11-DT-F3				
			20	SE-30D-MR20-DT-F3				
			02	SE-30D-MR02-DT-F3				
Key-Lock Push-button with Brushed Metal Bezel (Non-Lighted)		Push to maintain	11	SE-30D-MR11-NT-F4	R=Red	00=No Lamp	40Ø	
			20	SE-30D-MR20-NT-F4				
		Turn key to release	02	SE-30D-MR02-NT-F4				

Ordering Code: SE-30D-MRXX-XX-XX-X-XX-XX

SE-30D-MR	Contact XX	Configuration XX	Button Form XX	Color X	Lamp Voltage XX	Operator Size XX
	11=1NO+1NC 20=2NO 02=2NC	NM= Non-Lighted Momentary NT= Non-Lighted Maintained DM= LED Lighted Momentary DT= LED Lighted Maintained	F1= Emergency Stop Push-button F2= Mushroom Push-button F3= Lighted Mushroom Push-button F4= Key-Lock Mushroom Push-button	R=Red G=Green Y=Yellow B=Blue W=White K=Black	00=No Lamp 21=6V AC/DC 22=12V AC/DC 23=24V AC/DC 24=36V AC/DC 25=48V AC/DC 26=110V AC/DC 27=127V AC/DC 28=220V DC only 31=220V AC only 32=380V AC only	40= 40Ø mushroom 60= 60Ø mushroom

Technical Parameters

Environmental Temperature	-25°C ~ +55°C	Voltage	AC-15	DC-13
Contact Resistance	≤ 50mΩ	24V		6A
Withstand Voltage	2500VAC 50Hz 1min	48V		3A
Insulation Voltage Rating U _i	660VAC	110V		1A
Protection Level	IP65	220V	6A	0.5A
Mechanical Life	50x10 ³ Times	380V	4A	
		660V	2A	



SOLITRONICS ENGINEERING LTD.

2202, Perfect Industrial Building, 31 Tai Yau Street, San Po Kong, Kowloon, Hong Kong

TEL : (852) 2730-8145

FAX : (852) 2730-3245

E-mail : info@solitronics.com

30mmØ LED Selector Switches (Non-Lighted) with Brush Metal Bezel and Metal Mounting Base

Date:
24th Mar 2007

Group:
SE-30D

Part Number:
SE-30D-SSXX-XXX-XX-X-XX

Data Sheet:
SE-30D-SS

IEC-60947 GB-14048.5 IP40



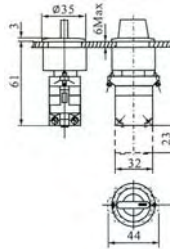
**30mmØ
Short Knob
Selector
Form-1**



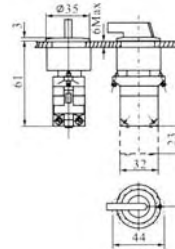
**30mmØ
Long Knob
Selector
Form-2**



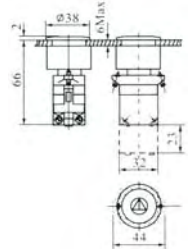
**30mmØ
Key Knob
Selector
Form-3**



Outline
Dimensions
Form-1



Outline
Dimensions
Form-2



Outline
Dimensions
Form-3

Product	Style	Working Manner				Contact	Type	Color	Lamp Voltage		
30mmØ Short Knob Selector with Brushed Metal Bezel	Form-1	L R	L C	C R		11	SE-30D-SS11-N2X-F1	R=Red G=Green Y=Yellow K=Black	00=No Lamp		
		2T	2L	2R		20	SE-30D-SS20-N2X-F1				
						02	SE-30D-SS02-N2X-F1				
		L C R	L C R	L C R	L C R	11	SE-30D-SS11-N3X-F1				
		3T	3L	3R	3B	20	SE-30D-SS20-N3X-F1				
						02	SE-30D-SS02-N3X-F1				
30mmØ Long Knob Selector with Brushed Metal Bezel	Form-2	L R	L C	C R		11	SE-30D-SS11-N2X-F2			S=Silver	00=No Lamp
		2T	2L	2R		20	SE-30D-SS20-N2X-F2				
						02	SE-30D-SS02-N2X-F2				
		L C R	L C R	L C R	L C R	11	SE-30D-SS11-N3X-F2				
		3T	3L	3R	3B	20	SE-30D-SS20-N3X-F2				
						02	SE-30D-SS02-N3X-F2				
30mmØ Key Knob Selector with Brushed Metal Bezel	Form-3	L R		C R	Triangle Key Knob	11	SE-30D-SS11-D2T-F3	S=Silver	00=No Lamp		
		2T		2R		20	SE-30D-SS20-D2T-F3				
						02	SE-30D-SS02-D2T-F3				
		L C R			Rectangle Key Knob	11	SE-30D-SS11-D3T-F3				
		3T				20	SE-30D-SS20-D3T-F3				
						02	SE-30D-SS02-D3T-F3				

Ordering Code: SE-30D-SSXX-XXX-XX-X-XX

SE-30D-SS	Contact XX	-	Lighted X	Position & Switch Mode XX	-	Button Form XX	-	Color X	-	Lamp Voltage XX
	11=1NO+1NC 20=2NO 02=2NC		N= Non-Lighted D= LED Lighted	2T=2-Pos. Maintained 2L=2-Pos. Left to Centre Momentary 2R=2-Pos. Right to Centre Momentary 3T=3-Pos. Maintained 3L=3-Pos. Left to Centre Momentary 3R=3-Pos. Right to Centre Momentary 3B=3-Pos. L/R to Centre Momentary		F1= Short Knob F2= Long Knob F3= Key Knob		R=Red G=Green Y=Yellow K=Black S=Silver		00=No Lamp 21=6V AC/DC 22=12V AC/DC 23=24V AC/DC 24=36V AC/DC 25=48V AC/DC 26=110V AC/DC 27=127V AC/DC 28=220V DC only 31=220V AC only 32=380V AC only

Technical Parameters

Environmental Temperature	-25°C ~ +55°C	Voltage	AC-15	DC-13
Contact Resistance	≤ 50mΩ	24V		6A
Withstand Voltage	2500VAC 50Hz 1min	48V		3A
Insulation Voltage Rating U _i	660VAC	110V		1A
Protection Level	IP65	220V	6A	0.5A
Mechanical Life	300x10 ⁵ Times	380V	4A	
		660V	2A	